



# MAYO CLINIC PROCEEDINGS

[www.mayoclinicproceedings.org](http://www.mayoclinicproceedings.org)



Table of Contents




December 2018 Volume 93 Number 12

The January online issue of *Proceedings* will be available by Wednesday, January 2.  
Sign up for an alert to the online Table of Contents at [www.mayoclinicproceedings.org](http://www.mayoclinicproceedings.org)

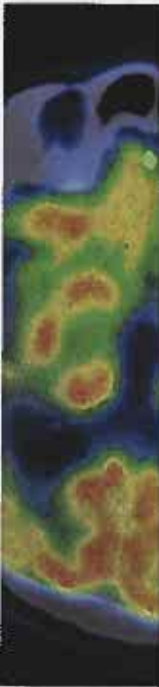
## Editorials

- 1695** **Identifying Women With a History of a Hypertensive Disorder of Pregnancy: Values, Challenges, and Opportunities**  
*Jennifer J. Stuart*
- 1698** **Addressing the Needs of International Patients at End of Life in a Tertiary Care Medical Center**  
*Kevin J. Whitford, Stephanie L. Hines, Mohamad Bydon, and David L. Hayes*
- 1700** **The Impact of Mediators of Health Literacy on Clinical Outcomes in Cardiovascular Diseases**  
*Hector O. Ventura and Ileana L. Piña*
- 1703** **Current, Emerging, and Anticipated Therapies for Sickle Cell Disease**  
*Karl A. Nath and S. Vincent Rajkumar*

## Original Articles


- 1707** **Electronic Algorithm Is Superior to Hospital Discharge Codes for Diagnoses of Hypertensive Disorders of Pregnancy in Historical Cohorts**  
*Natasa M. Milic, Elisabeth Codsí, Yvonne S. Butler Tobah, Wendy M. White, Andrea G. Kattah, Tracey L. Weissgerber, Mie Saiki, Santosh Parashuram, Lisa E. Vaughan, Amy L. Weaver, Marko Savic, Michelle M. Mielke, and Vesna D. Garovic* 
- This electronic tool will facilitate future epidemiological studies of long-term hypertensive disorders of pregnancy outcomes by correctly assigning both the diagnosis and the type of disorder in women with serial blood pressure measurements.
- 1720** **End-of-Life Care for Seriously Ill International Patients at a Global Destination Medical Center**  
*Daniel K. Partain, Justin J. Sanders, Richard E. Leiter, Elise C. Carey, and Jacob J. Strand* 
- This study provides a key first step in understanding the experience of seriously ill international patients and explores the ethical considerations providers and hospital systems face when caring for this unique population.
- 1728** **Health Literacy and 1-Year Mortality: Mechanisms of Association in Adults Hospitalized for Cardiovascular Disease**  
*Lindsay S. Mayberry, Jonathan S. Schildcrout, Kenneth A. Wallston, Kathryn Goggins, Amanda S. Mixon, Russell L. Rothman, and Sunil Kripalani, for the Vanderbilt Inpatient Cohort Study* 
- Identification of adults with limited health literacy can be a first step to providing tailored interventions to prevent poor outcomes.

Continued




- 1739 Pharmacologic Treatment of Intensive Care Unit Delirium and the Impact on Duration of Delirium, Length of Intensive Care Unit Stay, Length of Hospitalization, and 28-Day Mortality**  
*Lisa M. Daniels, Sarah B. Nelson, Ryan D. Frank, and John G. Park*   
 Treatment of intensive care unit delirium with melatonin or antipsychotic agents was not associated with a reduction in duration of delirium, length stay/hospitalization, or 28-day mortality.
- 1749 Limited Osteoporosis Screening Effectiveness Due to Low Treatment Rates in a National Sample of Older Men**  
*Cathleen S. Colón-Emeric, Carl F. Pieper, Courtney H. Van Houtven, Janet M. Grubber, Kenneth W. Lyles, Joanne Lafleur, and Robert A. Adler*   
 Although dual-energy x-ray absorptiometry testing in high-risk subgroups of men is associated with clinically important reductions in fractures, testing across the entire Veterans Affairs population was not associated with decreased fractures because of low treatment initiation and adherence rates.
- 1760 Improvement in Mortality and End-Stage Renal Disease in Patients With Type 2 Diabetes After Acute Kidney Injury Who Are Prescribed Dipeptidyl Peptidase-4 Inhibitors**  
*Cheng-Yi Chen, Vin-Cent Wu, Cheng-Jui Lin, Chih-Sheng Lin, Chi-Feng Pan, Han-Hsiang Chen, Yu-Feng Lin, Tao-Min Huang, Likwang Chen, and Chih-Jen Wu, for the National Taiwan University Study Group on Acute Renal Failure*   
 Dipeptidyl peptidase-4 inhibitor users had a lower risk of end-stage renal disease and mortality than did nonusers among patients with diabetes after weaning from dialysis-requiring acute kidney injury.
- 1775 Various Leisure-Time Physical Activities Associated With Widely Divergent Life Expectancies: The Copenhagen City Heart Study**  
*Peter Schnohr, James H. O'Keefe, Andreas Holtermann, Carl J. Lavie, Peter Lange, Gorm Boje Jensen, and Jacob Louis Marott*    
 Leisure-time sports that involve more social interaction were associated with the best longevity. The smallest improvement in life expectancy was noted in people who predominantly did health club activities.
- 1786 Time Trends in Outcomes After Aneurysmal Subarachnoid Hemorrhage Over the Past 30 Years**  
*Biagia La Pira, Tarun D. Singh, Alejandro A. Rabinstein, and Giuseppe Lanzino*  
 Outcomes in patients with aneurysmal subarachnoid hemorrhage have markedly improved over the past 3 decades, in terms of both in-hospital survival and functional recovery of survivors.
- 1794 New-Onset Diabetes and Preexisting Diabetes Are Associated With Comparable Reduction in Long-Term Survival After Liver Transplant: A Machine Learning Approach**  
*Venkat Bhat, Mahmood Tazari, Kymberly D. Watt, and Mamatha Bhat*  
 Sirolimus use increased the risk of new-onset diabetes by 33% after liver transplant as compared with tacrolimus-based immunosuppression.

### Brief Report

- 1803 Association of Low Urinary Sodium Excretion With Increased Risk of Stroke**  
*Lyanne M. Kienecker, Michele F. Eisenga, Ron T. Gansevoort, Rudolf A. de Boer, Gerjan Navis, Robin P.F. Dullaart, Michel M. Joosten, and Stephan J.L. Bakker* 

### Reviews

- 1810 Advances in the Treatment of Sickle Cell Disease**  
*Sargam Kapoor, Jane A. Little, and Lydia H. Pecker*
- 1825 Supraventricular Arrhythmias: Clinical Framework and Common Scenarios for the Internist**  
*Christopher V. DeSimone, Niyada Naksuk, and Samuel J. Asirvatham* 

Concise Review for Clinicians—CME Credit Offered

- 1842 **Medical Cannabis**  
*Jon O. Ebbert, Eugene L. Scharf, and Ryan T. Hurt*

Please note that articles with an "e" page designation are available only in the online version of the Journal at [www.mayoclinicproceedings.org](http://www.mayoclinicproceedings.org)

Residents' Clinic

- 1848 **35-Year-Old Man With Episodic Fever and Cough**  
*Kristyn L. Lewis, Sheetal Patel, and Jose Valery*
- 1853 **57-Year-Old Man With Atypical Chest Pain**  
*Brody D. Slostad and Nandan S. Anavekar*
- e125 **79-Year-Old Man With Shortness of Breath and Fevers**  
*Jaskanwal D. Sara, Megha Prasad, and Suraj Kapa*

Thematic Review Series on Gastroenterological Diseases—CME Credit Offered

- 1858 **Management Options for Irritable Bowel Syndrome**  
*Michael Camilleri*

Letters to the Editor

- 1873 **Validity of Mobile-Based Technology vs Direct Observation in Measuring Number of Steps and Distance Walked in 6 Minutes**  
*Joshita Poojary, Esha Arora, Alisha Britto, Zahra Polen, Ross Arena, and Abraham Samuel Babu*
- 1874 **Association Between Pancreatic Cancer and Dipeptidyl Peptidase-4 Inhibitors Use in a Case-Control Study**  
*Shih-Wei Lai, Cheng-Li Lin, and Kuan-Fu Liao*

Medical Images

- 1881 **Solitary Fibrous Tumor: A Giant Pleural Mass**  
*Federica De Giacomi and Narat Srivali*

Path to Patient Image Quiz

- 1883 **Intracholecystic Papillary-Tubular Neoplasm of the Gallbladder**  
*Saba Yasir and Lori A. Erickson*

Art at Mayo Clinic

- e131 **Immaculate Conception of Los Venerables by Bartolomé Estaban Murillo**  
*Margaret R. Wentz*



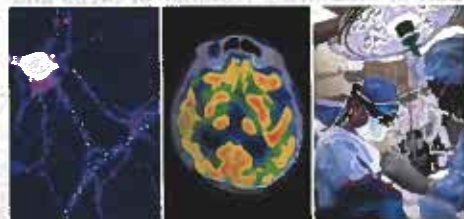
## Other Features

- 33A Professional Opportunities  
 1876 Correction  
 1877 Reviewers for *Mayo Clinic Proceedings* (2018)

## Coming Soon...





- |   |   |
|---|---|
| Exceptional Human Longevity   | New Paradigm for Cytomegalovirus Disease Prevention in Face Transplant  |
| Genomics as Advanced Fortune Teller                                     | Resident Knowledge of Menopause Management  |
| Biomarkers to Distinguish Risk in Prostate Cancer                       | Intra-Hospital Deep Venous Thrombosis in Acutely Ill Patients   |
| Reconciling Opportunistic and Population Screening in Clinical Genomics | Treatment of Temporomandibular Dysfunction  |
| Chronic Abdominal Wall Pain   | Electroacupuncture vs Pelvic Floor Muscle Training Plus Solifenacin for Women With Mixed Urinary Incontinence |
| Mechanisms of Disease: Inflammatory Bowel Diseases                      |   |
| Echocardiographic Assessment of Left Ventricular Systolic Function      |   |

## Cover Image



The composite cover image highlights 3 salient themes: the wide-ranging effects of human biomedical research and discovery in driving progress in understanding and treating human disease (symbolized, on the left, by a neuron and its ramifying dendrites and axons); state-of-the-art investigation in evaluating human disease (symbolized, in the middle, by a positron emission tomographic image of the brain); and the indispensability of teamwork and the coalescence of expertise in providing the best possible care for patients (symbolized, on the right, by a collaborating surgical/interventional team).

## Icon Key

-  This article has been given "Editor's Choice" distinction.
-  An author interview accompanies this article.
-  This article is online only at [www.mayoclinicproceedings.org](http://www.mayoclinicproceedings.org).
-  Supplemental material accompanies this article at [www.mayoclinicproceedings.org](http://www.mayoclinicproceedings.org).



"Mayo Clinic Proceedings," "Mayo," "Mayo Clinic," and the triple-shield Mayo Clinic logo are all registered marks of Mayo Foundation for Medical Education and Research.

MAYO CLINIC PROCEEDINGS (ISSN 0025-6196) is published monthly by Elsevier on behalf of Mayo Foundation for Medical Education and Research. Periodicals postage paid at New York, NY, and additional mailing offices. POST MASTER: Send address changes to Elsevier, Journal Returns, 1799 Highway 50 East, Linn, MO 65051, USA.



© 2018 Mayo Foundation for Medical Education and Research

Supplemental material attached to journal articles has not been edited, and the authors take responsibility for the accuracy of all data.